

ENTER THE GATEWAY

TO AN ECONOMIC POWERHOUSE



WORLD TRADE CENTER™

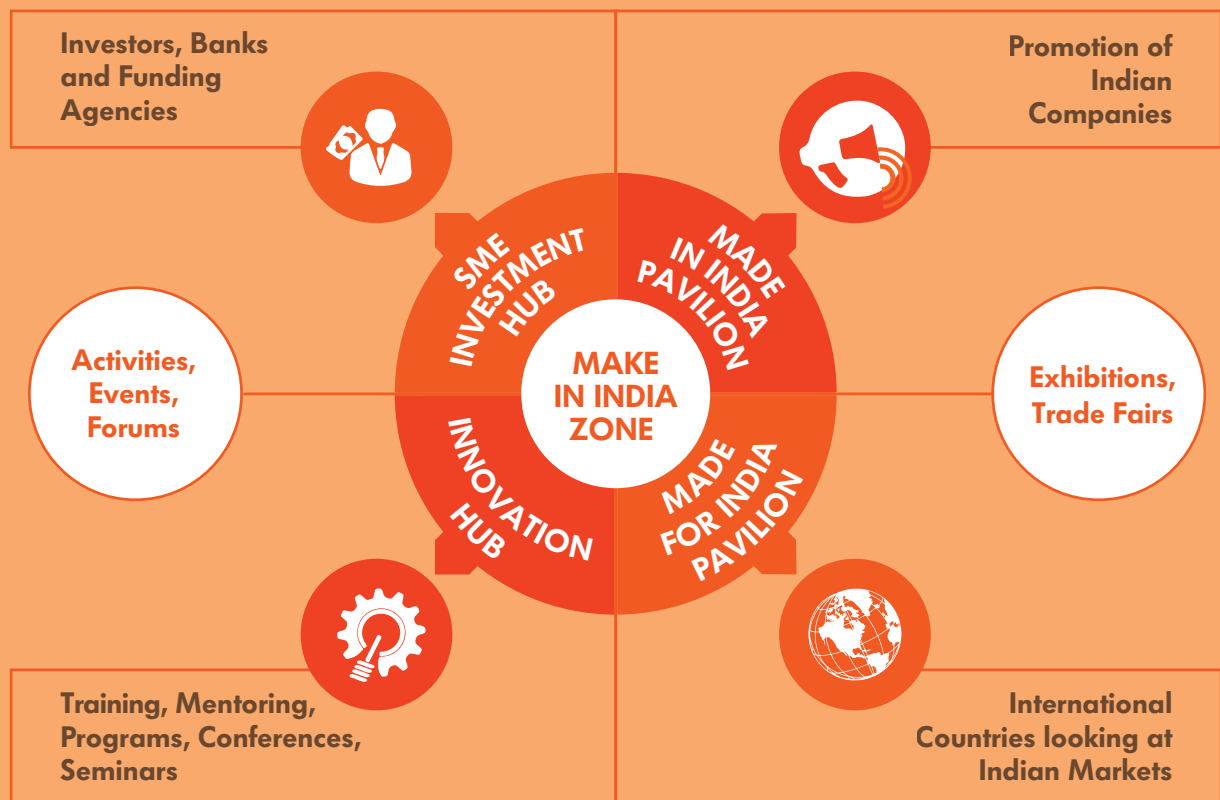
Noida CBD • GIFT City • Chandigarh • Noida • Faridabad • Surat • Vadodara • Ahmedabad • Bhopal
• Lucknow • Patna • Amritsar



**VERBIND IS A SINGLE INTEGRATED
TRADE, INVESTMENT AND BUSINESS
FACILITATION ORGANISATION WHICH
PROVIDES SERVICES ACROSS INDIAN,
ASEAN AND GLOBAL MARKET.
IT WORKS ACTIVELY WITH THE
WORLD TRADE CENTERS ASSOCIATION,
NEW YORK (WTCA) THAT REPRESENTS
330 CITIES IN 100 COUNTRIES ACROSS
THE GLOBE.**

As a premier service provider, VERBIND is dedicated to the establishment and effective operation of World Trade Centers as instruments for trade expansion, business harmony and economic prosperity in India. VERBIND has recently expanded its operations to non WTC members, emerging as a preferred and independent platform for integrated trade facilitation and business management services that seeks to unify the multifaceted components of services, skills, knowledge and infrastructure.

MADE IN INDIA. MADE FOR INDIA



SERVICES FOR GLOBAL TRADE

TRADE INVESTMENT



- I. Market Research and Consulting
- II. Advisory
- III. Trade Information
- IV. Product Feasibility

BUSINESS CONNECT



- I. Joint Venture
- II. Merger Acquisition
- III. Franchising, Branding & Licensing
- IV. Business to Business
- V. Business to Consumer
- VI. Business to Government
- VII. Collaboration
- VIII. Technology Adoption
- IX. WTC Global Membership

TRADE SERVICES



- I. Trade Missions
- II. Trade Leads
- III. Buyer Seller Connect
- IV. Events/Conferences /Fairs
- V. Digital Platform

WTC INFRASTRUCTURE



- I. Office Spaces
- II. Virtual Offices
- III. Business Centres
- IV. Meeting Rooms
- V. Retail & Exhibition Area
- VI. Video Conferencing
- VII. Dedicated Exporters Zone

SKILLS AND KNOWLEDGE



- I. Training and Programmes



BUSINESS CENTER SERVICES



- Video Conferencing • Temporary office space • Meeting rooms
- Secretarial services • Translation services • Travel desk

INCUBATION CENTER



An effective launch pad for startup companies, WTCs provide a gradual transition from fully serviced incubator spaces to stand alone offices.

- Personal furnished cabins • Large suites equipped with workstations
- Common meeting rooms • Conference facilities • Business lounge
- Event plazas/Expo center • Seamless telecommunication network

VENTURE ACCELERATOR CENTER

The primary objective of Venture Accelerator Centers is business growth and revenue enhancement for startups and MSMEs.

- Sound business planning • Understanding customers & markets • Setting goals & priorities • Acquiring skills & recruiting talent • Raising capital

WTC CLUB



The primary aim of a WTC Club is to encourage communication among key international trade executives. It is both a virtual and a physical facility that gives members access to modern office spaces in as many locations as there are WTCs.

REAL TRANSPARENT ROBUST GROWTH



**THE CHANGING FACE OF THE WORLD'S
ECONOMIC CLIMATE HAS FORCED
GOVERNMENTS ALL OVER THE WORLD
TO RE-EVALUATE POLICY AT A
FUNDAMENTAL LEVEL. PUTTING INTO
FOCUS SOME HARD TRUTHS THAT MUST
BE ADDRESSED AND REFORMED.**

Nowhere in the world is this urgency for change more imminent than in India. The country has accelerated the rate of reforms at a rapid pace and continues to do so. The sentiment of the nation is further pressing administrations to shed big government baggage and create efficient economic models that lead to real and sustainable growth that lasts for decades to come.

India's accelerated and stable reforms process, strong forex reserves, rising per capita income, sharp focus on infrastructure development have created a consumer centric economy which will lead the country to become the world's 5th largest consumer market by the year 2025.

This immense progress is being fueled primarily by a few growth centers in various parts of the country. Our endeavour is to recognize these centers and become an integral and essential part of their commercial consciousness. An entity that these regions rely heavily on.

INDIA BY 2030:

590

MILLION PEOPLE WILL LIVE IN CITIES, NEARLY TWICE THE TOTAL POPULATION OF USA TODAY.

68

CITIES WILL HAVE POPULATION OF 1 MILLION PLUS; EUROPE HAS 35 TODAY.

91

MILLION URBAN HOUSEHOLDS WILL BE MIDDLE CLASS, UP FROM 22 MILLION TODAY, WITH INCOME RANGING FROM \$6,700 TO \$20,000.

29

THE AVERAGE AGE IN INDIA IN 2020, COMPARED TO 37 IN CHINA AND 45 IN WESTERN EUROPE.

270

MILLION PEOPLE: THE NET INCREASE IN WORKING-AGE POPULATION.

5

TIMES: THE NUMBER BY WHICH GDP WILL HAVE MULTIPLIED, SURPASSING GERMANY AND JAPAN ON THE WAY.



296

%. ESTIMATED RISE IN HOUSEHOLDS BY 2020 WITH INCOME OF OVER \$20,000.

54

MILLION: NUMBER OF NEW COLLEGE GRADUATES OVER THE NEXT 10 YEARS. IN THE SAME PERIOD US WILL HAVE ONLY 30MN NEW COLLEGE GRADUATES.

70

%. NET NEW EMPLOYMENT THAT WILL BE GENERATED IN CITIES.

55

THE NUMBER OF BILLIONAIRES: IN INDIA IN 2011, HIGHER THAN IN GERMANY, HONG KONG, JAPAN, CANADA OR ITALY.

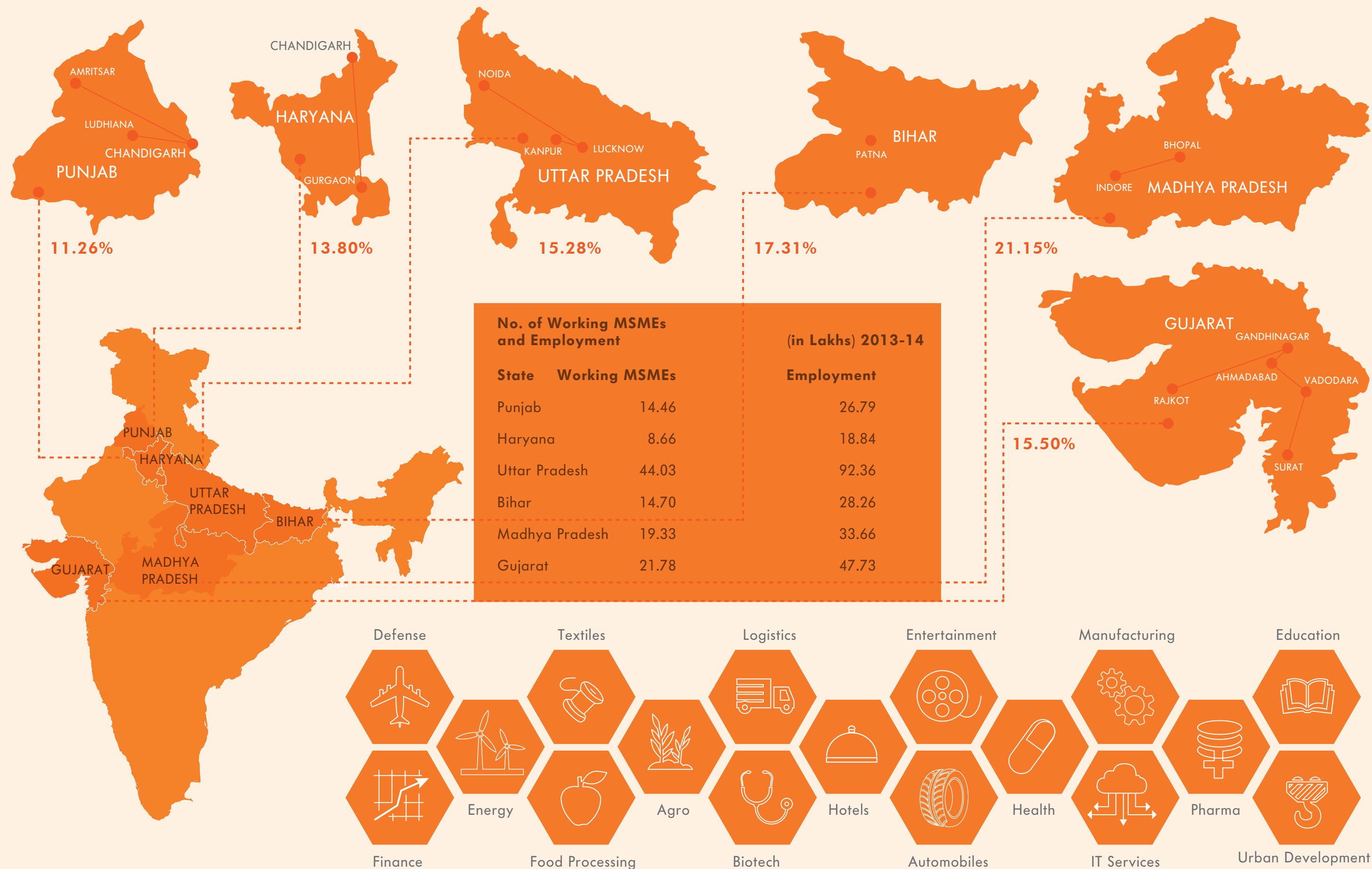
12

TH: RANK OF INDIA W.R.T. DOLLAR MILLIONAIRES IN 2011 (OVER 150,000 HOUSEHOLDS).

ANNUAL GDP GROWTH RATE: 2013-2014

INDIA: UPCOMING HOME TO 100 SMART CITIES

The government has unveiled a list of 98 cities, including 24 state capitals for its ambitious Smart Cities project, which are to usher India into a new era of growth, facilitating both local and global business in the nation



DELHI MUMBAI INDUSTRIAL CORRIDOR (DMIC)

A high impact industrial area within 150 kms distance on both sides of the DFC, with an investment potential of US\$ 90bn being laid down between Delhi and Mumbai.

- A flagship project of Japan and India
- DMIC area to be developed as 'Global Manufacturing & Trading Hub'
- Supported by world class infrastructure & enabling policy framework
- 37% of the planned Delhi Mumbai Industrial Corridor route is through Gujarat
- More than 60% of total investments are likely to be in Gujarat



POWERED BY DMIC AND OTHER INVESTMENT CORRIDORS, THE VIBRANT TIER II & III CITIES WILL DIRECT FUTURE GROWTH

Key Growth Drivers:

- Smart Cities that offer programs to increase size and skills of talent pool and technology development
- Make in India led increased competitiveness of SME base and incubation of start-ups and entrepreneurs
- Ease of doing business through creation of specialized laws, regulations, and enforcement mechanism

One of the biggest infrastructure projects set to increase the share of manufacturing in India's GDP from current 16% to 25% by 2017.

DMIC will cover the development of

- 1540 km long Western Dedicated Freight Corridor (WDFC) with 24 nodes (Investment Regions and Industrial Areas) across seven states
- 1839 Km long Eastern Dedicated Freight Corridor (EDFC) from Ludhiana, Punjab till Dankuni, West Bengal covering 6 states: Punjab, Haryana, Uttar Pradesh, Bihar, Jharkhand and West Bengal

Estimated Investment
under DMIC

USD 90 Billion

Increased

- ✓ Employment **x2**
- ✓ Industrial Output **x3**
- ✓ Exports **x4**

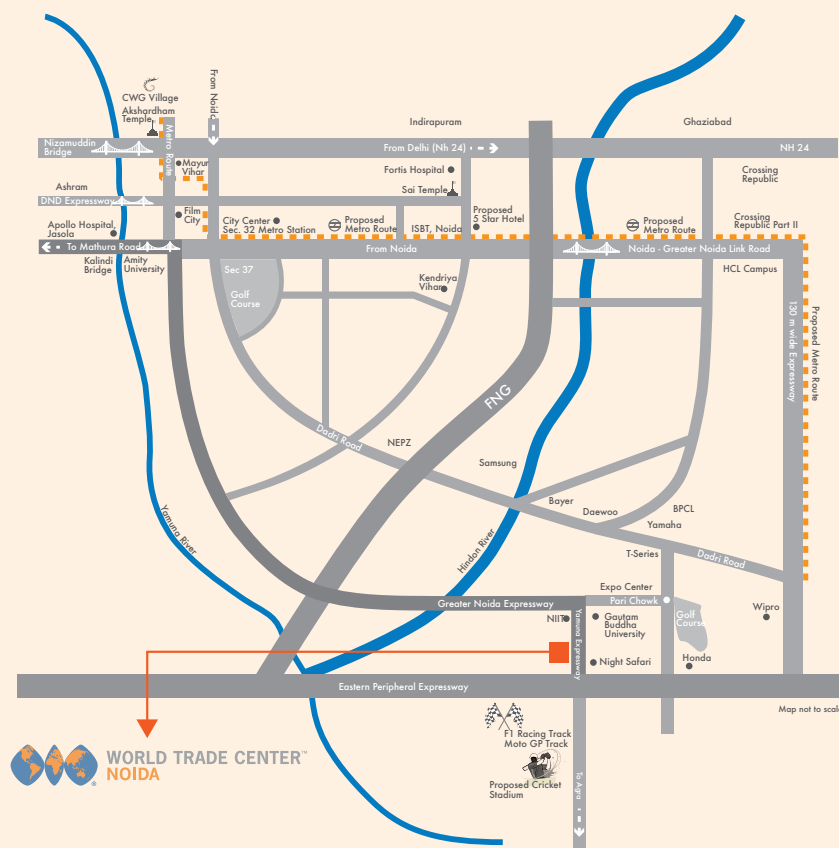
NOIDA - A PHENOMENON IN THE MAKING

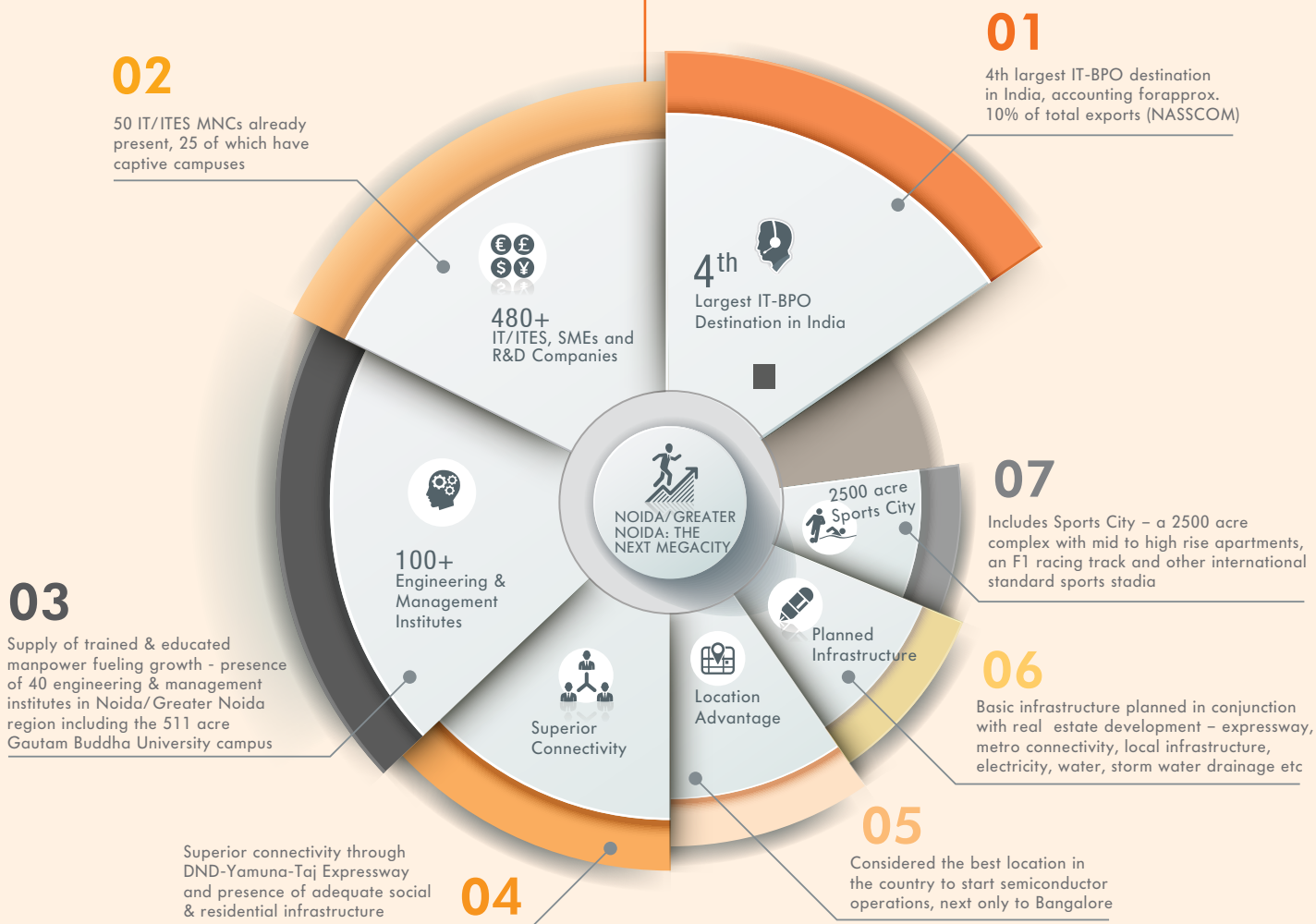
THE FASTEST DEVELOPING AREA OF THE NCR REGION, DESPITE THE SLOWDOWN, NOIDA HAS SURPASSED EXPECTATIONS YEAR ON YEAR.

The aggressive pace of development is matched by the number of international brands and corporates that now throng the region.

Infrastructure has developed in tandem - wide roads, big commercial centers, and institutions - which have lifted the stock of this place among developers, end users and investors, grabbing the attention of the international business drivers such as the World Trade Center.

Analyzing the growing stature of Noida on the Indian economic map, WTC has developed its new age business center on the strategic location at Tech Zone - 1, Greater Noida.





Actual site image



1. TEC 1 AND TEC 2
6. ONE E

2. SIGNATURE
7. ONE H

3. ONE A, B & C
8. QUAD

4. RIVERSIDE RESIDENCES
9. CUBIT

5. ONE D
10. IT PLOTS

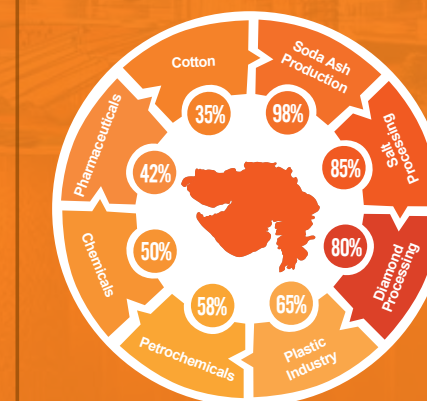
WTC NOIDA – OVER VIEW

- 4.2 Million sq.ft. Complex
- Located in Tech Zone, Yamuna Expressway
- Project with 2020 Vision
- Offer Dynamic Office Spaces
- Built to Suit Options
- Adapt to Suit Offices

- Furnished Office Spaces
- Business Center
- Offices starting from 500 sq.ft.
- Phase I - Approx.6 lac sq.ft. of office space-operational and leased out
- 5 Acre of Terrace Farming for the employees operating from the complex
- Dedicated Made in India Made for India Zone for promoting SMEs/MSMEs
- Dedicated Exporters zones for International Trade facilitation services

GIFT CITY: SETTING THE STANDARD FOR 100 SMART CITIES IN INDIA

India's first International Financial Services Center (IFSC) and one of the most ambitious projects ever undertaken in the Indian Infrastructure space, GIFT City seeks to be at or above par with globally benchmarked financial centers. Conceptualized as a global and financial services hub, GIFT aims at enabling economic growth through relocation and centralization of India's financial and IT sectors. As a globally recognized brand, the World Trade Center is a lucrative project in GIFT City. Falling in line with the prime mission of the network, WTC GIFT will reflect the business resources and business goals of Gujarat as a whole with carefully tailored services for individual objectives, opportunities and obstacles of the region.



GUJARAT OVERVIEW

- The economic growth indicators of Gujarat have been impressive with an achievement of an average annual growth rate of 10.4 % in the last five years
- Gujarat contributes to 16% of the industrial production of the country
- Gujarat has mobilised the highest share (12.7%) of the investments through IEMs in the country

GIFT CITY FEATURES



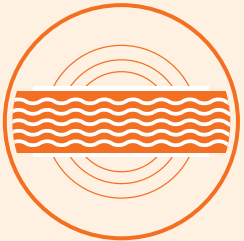
**WORLD CLASS
ROADS**



**ZERO DISCHARGE
WATER MANAGEMENT**



**99% POWER
RELIABILITY**



**DISTRICT
COOLING SYSTEM**



**SAMRUDDHI
SAROVAR**



**MULTI-CAR
PARKING**



**UTILITY TUNNEL
FOR TOUTING ALL
UTILITY SERVICES**



**AUTOMATED WASTE
COLLECTION SYSTEM**



**FIRE STATION
AND EMERGENCY
RESPONSE CENTRE**

OPPORTUNITIES IN GIFT IFSC

OFFSHORE BANKING

- Corporate banking
- Servicing JV/WOS of Indian cos. registered abroad
- Factoring /forfaiting of export receivables



OFFSHORE ASSET MANAGEMENT

- Fund accounting
- Investment services
- Custodial services
- Trust services etc.



ANCILLARY SERVICES

- Legal, Accounting & Audit
- Research and analytics etc.
- Compliance, Recruitment, Risk Management etc.



OFFSHORE INSURANCE

- General / Life insurance
- Co-Insurance
- Reinsurance
- Captive insurance etc.



CAPITAL MARKETS

- Exchanges
- Brokerage services
- Permissible Securities: Equity shares of cos. Incorporated outside India, Depository receipts, Debt securities, currency and Interest rate derivatives, index based derivatives



EASE OF OPERATION FOR INTERNATIONAL BANKING UNITS AT GIFT CITY





- **IBUs can undertake transactions with non-resident entities other than individual / retail customers / HNIs.**
- **All transactions of IBUs shall be in currency other than INR.**
- **IBUs can deal with the Wholly Owned Subsidiaries / Joint Ventures of Indian companies registered abroad.**
- **IBUs are allowed to have liabilities including borrowing in foreign currency only with original maturity period greater than one year. They can however raise short term liabilities from banks subject to limits as may be prescribed by the Reserve Bank.**
- **IBUs are not allowed to open any current or savings accounts. They cannot issue bearer instruments or cheques. All payment transactions must be undertaken via bank transfers.**
- **IBUs are permitted to undertake factoring / forfaiting of export receivables.**
- **IBUs are permitted to undertake transactions in all types of derivatives and structured products with the prior approval of their Board of Directors. IBUs dealing with such products should have adequate knowledge, understanding, and risk management capability for handling such products.**

A CONNECTED BUSINESS HUB

- The project is located on the bank of the Sabarmati river and is around 12 km from Ahmedabad International Airport.
- GIFT is easily accessible from all directions through 4-6 lane State and National Highways.
- Proposed Metro and BRTS Connectivity from Gandhinagar and Ahmedabad.
- Thriving Socio-Edu-Cultural Amenities such as Schools, Hospitals, Educational Institution, and Cultural Centers at both Gandhinagar and Ahmedabad within easy reach.
- Vast pool of technically proficient local talent from World Renowned institutes – IIMA, IIT and Several R&D institutes
- Presence of Large number of MNCs; Vibrant SME base: Automotive, Pharma, Textiles, IT/ITeS



Railway
Station



International
Airport

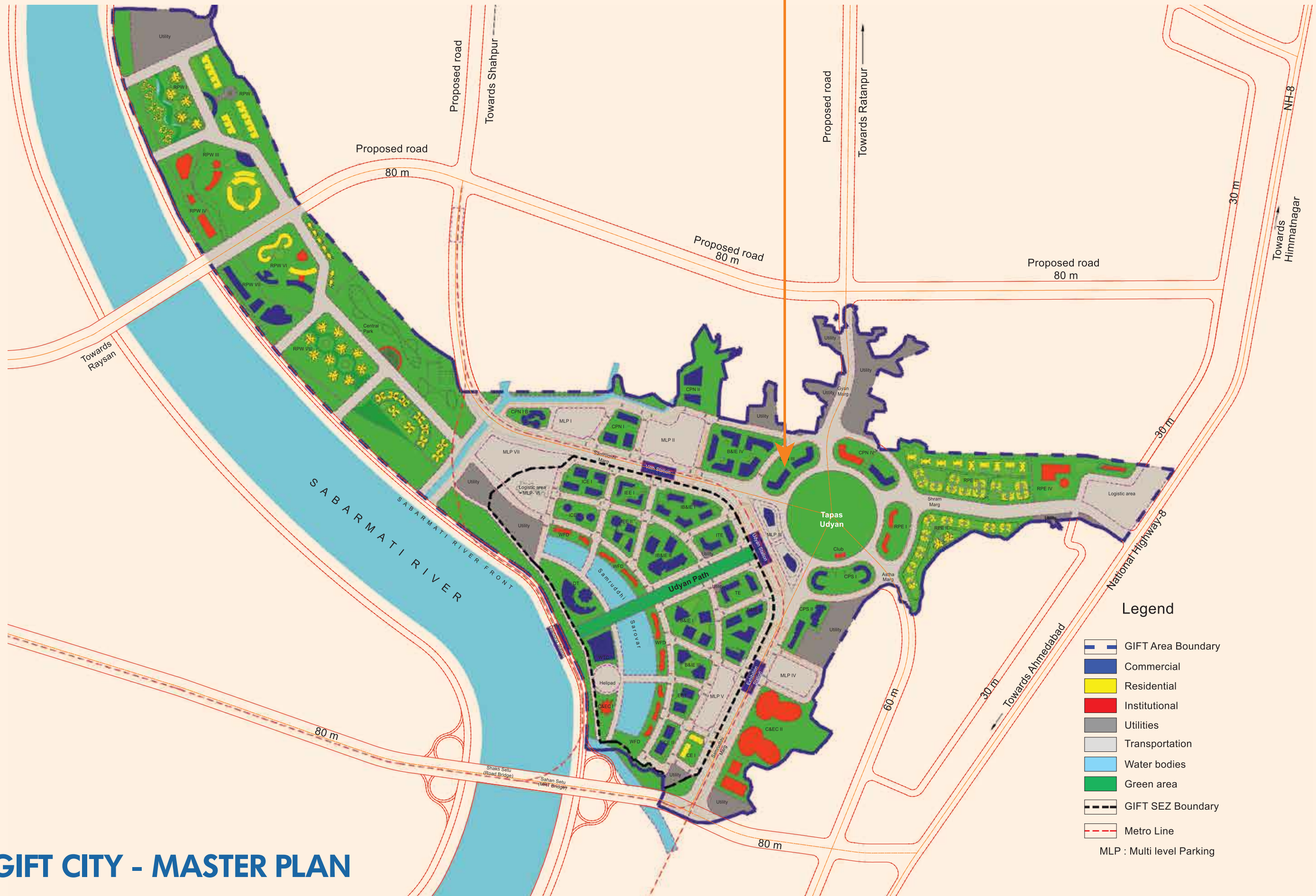
DMIC

Metro Route

BRTS Route



WORLD TRADE CENTER™
GIFT CITY



GIFT CITY - MASTER PLAN



1

TOWER A - G+6

- Total Tower Area – 1.2 Lac sqft.
- Typical Floor: 18000 sqft.
- **Ground Floor:** Mixed Use, Retail, Commercial

2

TOWER B - G+27

- Total Tower Area – 7.3 Lac sqft.
- Typical Floor: 29000 sqft.
- **Ground Floor:** Made in India Exhibition Space Mixed Use, Retail
- **First Floor:** Made in India Incubation Zone/ Business Center Auditorium/Multipurpose hall

3

TOWER C - G+18

- Residential Apartments
- Total Tower Area – 3 Lac sqft.
- Typical Floor: 18000 sqft.
- **Ground Floor:** Made in India Trade Pavilions Mixed Use, Retail
- **First Floor:** Made in India Finance and Investment Zone

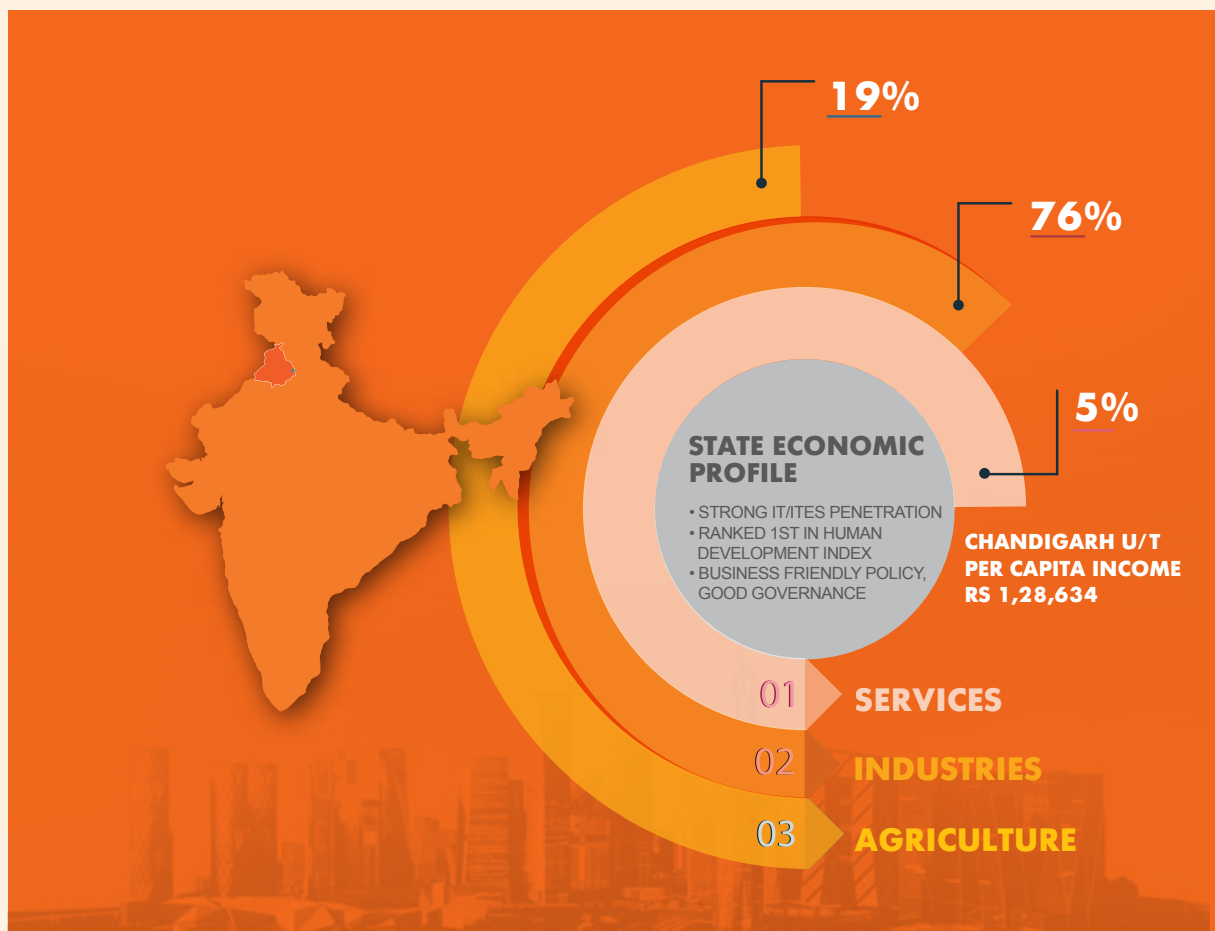
4

TOWER D - G+6

- Total Tower Area – 1.2 Lac sqft.
- Typical Floor: 18000 sqft.
- **Ground Floor:** Mixed Use, Retail, Commercial

CHANDIGARH TRI-CITY-A LUCRATIVE SOCIO-ECONOMIC GROWTH HUB

THE LOCAL ECONOMY OF CHANDIGARH IS FLOURISHING AT A SUSTAINED PACE AND WTCs INTENDS TO TAKE ITS GROWTH GRAPH TO REST OF THE GLOBE.

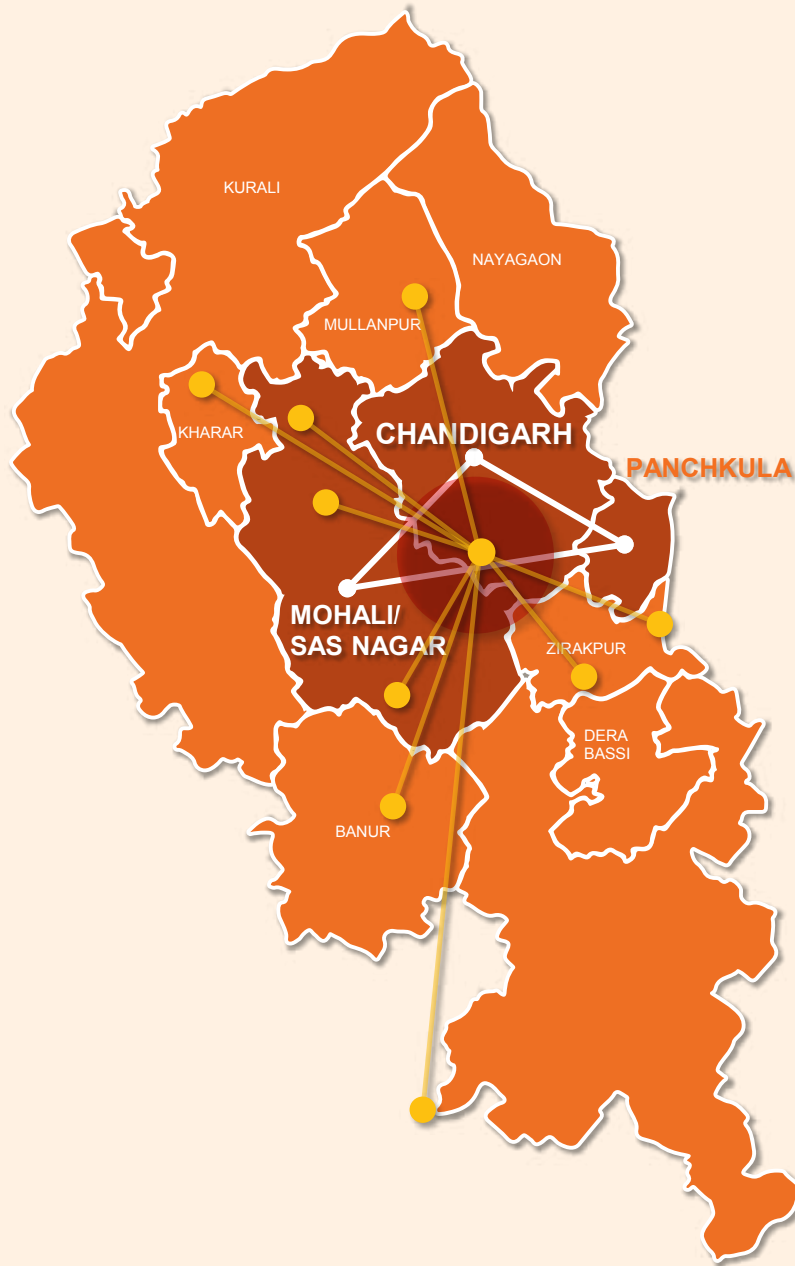


Tri City – among the four fastest growing cities in India - is a top ranking global IT destination and home to emerging entrepreneurs. It is also a regional axis for the service industry.

WTC will introduce Chandigarh to international connectedness and competitiveness with high profile developments raising its international awareness. It will also convey a premier international business address, making it a highly desirable location for business tenants to occupy.

Sources: State-wise Economic Profile (2010-11). State-wise Per Capita Income at Constant Prices (2011). Directorate of Economics & Statistics of respective State Governments, and for All-India -- CSO.

AT A 'FUTURE-READY' LOCATION



IMMACULATE PLANNING & INFRASTRUCTURE

1.82x

the national average
per capita income

1st

in Human
Development Index
in the country

7th

among top 50 IT
and outsourcing
destinations globally

97.25%

Urban Population

A 1.5 MILLION SQ.FT.

STATE OF ART INTEGRATED COMPLEX IN IT CITY, MOHALI



WORLD TRADE CENTER™ CHANDIGARH



1 Signature Tower
G+17 Floors (2 Lacs sq.ft)
Typical Floor 10,000 - 12,000 sq.ft.
with WTC CLUB at Terrace

2 Retail Tower
G+3 Floors (2.8 Lacs sq.ft.)
8 Screen Multiplex, Food Court

3 Tower A, B & C
G+12 Floors each (6.9 Lacs sq.ft)
Typical Floor 20, 000 Sq.ft.

4 Service Apartment
G+14 Floors (2.2 Lacs sq.ft)
190 Rooms

WHERE THE PATHS TO SUCCESS INTERSECT



INTERNATIONAL AIRPORT

3 kms

TRIBUNE CROSSING

10 kms

RAILWAY STATION

14 kms

ISBT & CITY CENTRE

16 kms

QUARK CITY

10 kms

Located on the main crossing of Airport Road and Aerocity.
Metro Rail Connectivity: Line 1 to Panchkula. Line 2 to Aerocity.

CATALYSTS TO THE PROPITIOUS MARKET OF INDIA

THE VIRIDIAN GROUP IS TAKING THE IMMENSE POTENTIAL OF THE WORLD TRADE CENTER TO ALL OF INDIA. POST THE IMMENSE SUCCESS OF THE WTC NOIDA, THE COMPANY HAS IDENTIFIED THE CENTERS OF COMMERCE THAT WILL BE THE KEY DRIVERS OF THE REGION AND HAS PLANNED A STRATEGIC ROADMAP FOR A COUNTRY WIDE ROLLOUT OF THE BUSINESS COMPLEXES. BACKED BY THE VIRIDIAN PILLARS, ESPARK-VIRIDIAN, VCFS, THE FUTURE INSTITUTE AND VIRIDIAN FOUNDATION; VERBIND PROVIDES TRADE SERVICES TO INDIAN, ASEAN AND THE GLOBAL MARKET. AND AN ACTIVE INVOLVEMENT WITH WTCA ACTS AS THE PERFECT CATALYST TOWARDS FACILITATING GLOBAL BUSINESS.

CREATING A 360 DEGREE FACILITATION UNDER ONE ROOF THROUGH COLLABORATIONS WITH:

STATE/ COUNTRY	S NO.	SIGNED WITH
DELHI	1	EXPORT PROMOTION COUNCIL FOR HANDICRAFTS (EPCH)
	2	FRANZEN CONSULTING PVT. LTD
	3	INDIA CHINA TRADE CENTRE
	4	THE NATIONAL INSTITUTE FOR ENTREPRENEURSHIP AND SMALL BUSINESS DEVELOPMENT, MINISTRY OF MSME, GOVT OF INDIA
UTTAR PRADESH	5	INDIAN INDUSTRIES ASSOCIATION
	6	THE GOVERNOR OF UTTAR PRADESH- UP-NRI DEPARTMENT
	7	MERCHANT CHAMBER OF UTTAR PRADESH
	8	NATIONAL CHAMBERS OF INDUSTRIES AND COMMERCE, UP
GUJARAT	9	SOUTHERN GUJARAT CHAMBERS OF COMMERCE & INDUSTRY (SGCCI)
	10	GUJARAT STATE PLASTIC MANUFACTURERS ASSOCIATION (GSPMA)
	11	GUJARAT CHEMICAL ASSOCIATION
	12	GUJARAT PHARMACEUTICAL ASSOCIATION
	13	GUJARAT CHAMBER OF COMMERCE AND INDUSTRY (GCCCI)
	14	GUJARAT ELECTRONIC & SOFTWARE INDUSTRIES ASSOCIATION (GESIA)
	15	GUJARAT INFRASTRUCTURE DEVELOPMENT BOARD
	16	MOHALI INDUSTRIES ASSOCIATION (MIA)
PUNJAB	17	AARNA WORLDWIDE
MAHARASHTRA	18	SARTHI ADVISORS PRIVATE LIMITED
J&K	19	JAMMU CHAMBER OF COMMERCE & INDUSTRY (JCCI)
ANDHRA PRADESH	20	GOVERNMENT OF ANDHRA PRADESH
HARYANA	21	IAMSME OF INDIA
HARYANA	22	GOVERNMENT OF HARYANA
OVERSEAS		
NETHERLANDS	23	EUROPE INDIA BUSINESS COUNCIL NETHERLANDS COUNCIL FOR TRADE PROMOTION
CHINA	24	SOSV
CHINA	25	CHINACCELERATOR
CHINA	26	MOX
CHINA	27	WTC BEIJING & BEIJING ASSOCIATION OF TRADE IN SERVICES (CCPIT BEIJING)
CHINA	28	INVEST SHANGHAI
EMPANELMENT PARTNERS		
	29	FOUNTAINHEAD
	30	BDO INDIA LLP
	31	S N INDUSTRIAL CONSULTANTS
	32	RN LOGISTICS AND SUPPLY CHAIN PVT. LTD.
	33	HUSYS CONSULTING LIMITED
	34	FRANCHISE ORBIT
	35	CLASIS LAW



WTC Noida Corporate Office: **M6, GF 01, Uppals Plaza, Jasola Business District Centre, New Delhi – 110025**
Website: www.verbind.org

Disclaimer: The information and statistical data herein have been obtained from sources we believe to be reliable. such information has not been independently verified and we make no representation or warranty as to its accuracy, completeness or correctness. World Trade center is the registered trade mark of World Trade center Association, Inc., New York. This is not an offer of membership. All memberships shall be subject to terms and conditions. Services mentioned are only indicative and may differ from center to center. All services are subject to terms and conditions of respective centers.